

**Service Manual
Supplement****DVD Video Player****DVD-SL30 (US2)****PRODUCT CODE No.**
137 116 06

The construction of model DVD-SL30(US2) is similar to model DWM-380(US). The differences between these models require the bellow specified items. Please also refer to the original service manual DWM-380(US) (SM5810254) for other items.

CONTENTS

Service Mode	1
How to load software for MPEG P.W.Board	1
Wiring Connection	1
Exploded View (Cabinet & Chassis)	2
Parts List	3
Exploded view (DVD Mechanism)	6
Parts List	6
Schematic Diagram (DVD)	8
Schematic Diagram (MPEG)	10
Wiring Diagram (DVD and MPEG A Side)	12
Wiring Diagram (DVD and MPEG A Side Top Left)	14
Wiring Diagram (DVD and MPEG A Side Bottom Left)	16
Wiring Diagram (DVD and MPEG A Side Top Right)	18
Wiring Diagram (DVD and MPEG A Side Bottom Right)	20
Wiring Diagram (DVD and MPEG B Side)	22
Schematic Diagram (FRONT, POWER SUPPLY and POWER SW)	24
Wiring Diagram (FRONT, POWER SUPPLY and POWER SW)	26

SERVICE MODE

Setup Procedures

Displaying Internal Setup screen

Push NEXT button within three seconds after operating the Service Mode display.

On the Internal Setup screen shown on the right, set up Market and Region.

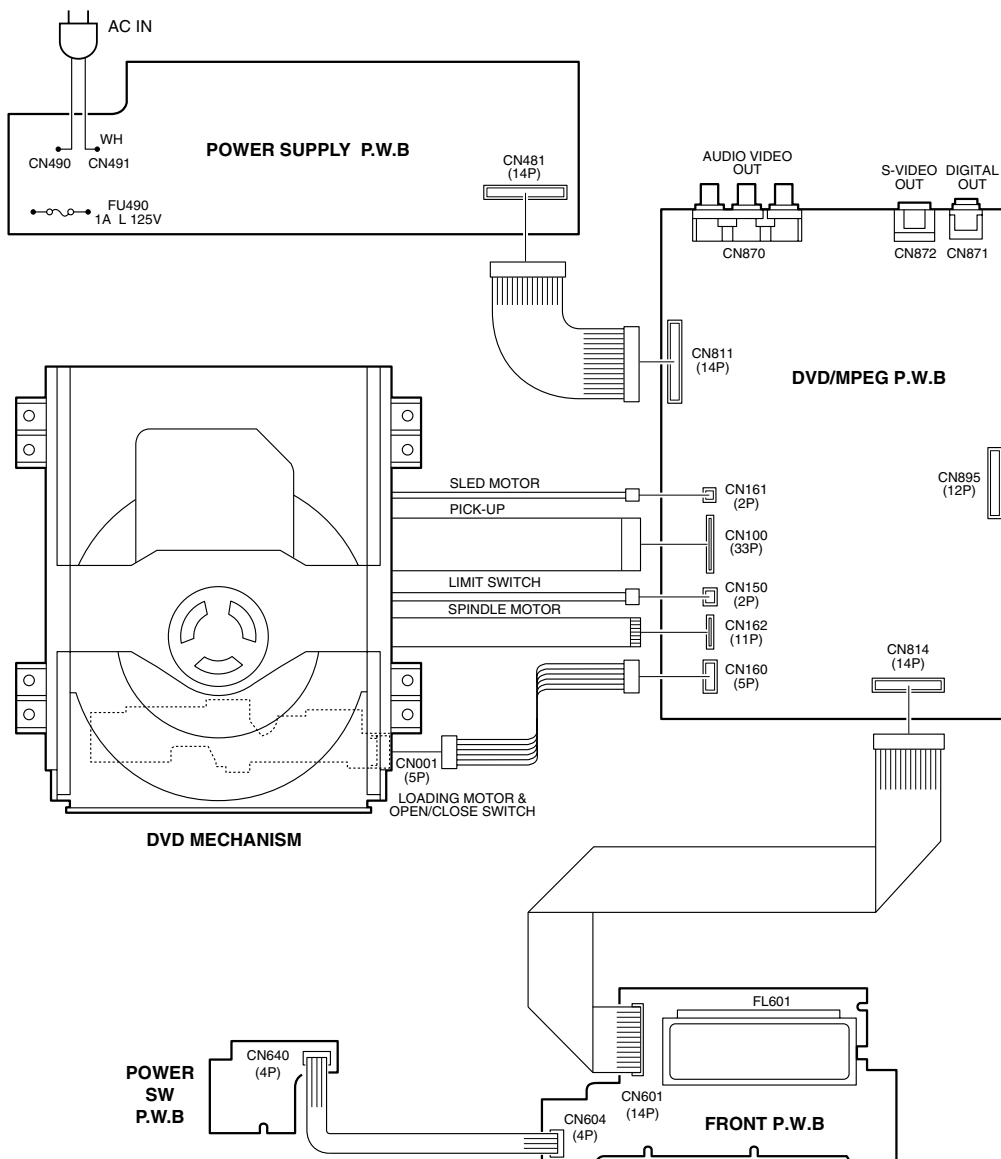
Model	Market	Region
DVD SL30/US2	SFC	1

Market/Region setup table.

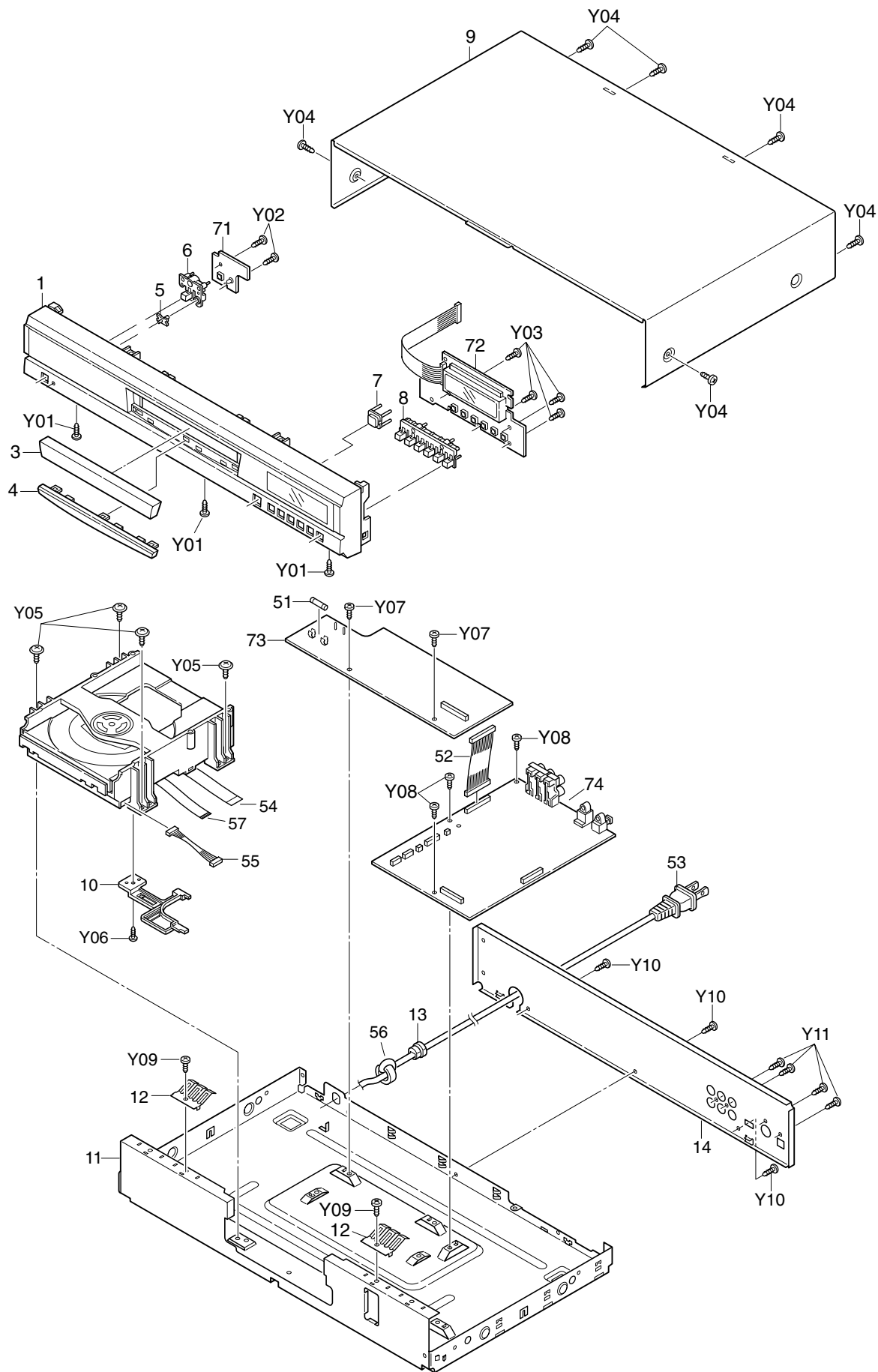
HOW TO LOAD SOFTWARE FOR MPEG P.W.BOARD

1. Power on, then open tray.
2. It take on CD-ROM for UPDATE software to the tray, and tray close.
3. Display "UP DATE" in the TV screen.
4. For the time being, tray open and FL display remain "UP DATE".
5. When software loading finished, FL display "STANDBY".
6. Next, set up market code and region code by "SERVICE MODE"
CD-ROM part code is "0PRADD7114A-A".

WIRING CONNECTION



EXPLODED VIEW (CABINET & CHASSIS)



PARTS LIST

PRODUCT SAFETY NOTICE

EACH PRECAUTION IN THIS MANUAL SHOULD BE FOLLOWED DURING SERVICING. COMPONENTS IDENTIFIED WITH THE IEC SYMBOL Δ IN THE PARTS LIST AND THE SCHEMATIC DIAGRAM DESIGNATED COMPONENTS IN WHICH SAFETY CAN BE OF SPECIAL SIGNIFICANCE. WHEN REPLACING A COMPONENT IDENTIFIED BY Δ , USE ONLY THE REPLACEMENT PARTS DESIGNATED, OR PARTS WITH THE SAME RATINGS OF RESISTANCE, WATTAGE OR VOLTAGE THAT ARE DESIGNATED IN THE PARTS LIST IN THIS MANUAL. LEAKAGE-CURRENT OR RESISTANCE MEASUREMENTS MUST BE MADE TO DETERMINE THAT EXPOSED PARTS ARE ACCEPTABLY INSULATED FROM THE SUPPLY CIRCUIT BEFORE RETURNING THE PRODUCT TO THE CUSTOMER.

CAUTION : Regular type resistors and capacitors are not listed. To know those values, refer to the schematic diagram.
 Regular type resistors are less than 1/4W carbon type and chip resistors.
 Regular type capacitors are less than 50V and less than 1000 μ F of Ceramic type and Electrolytic type.

PACKING & ACCESSORIES

REF.NO.	PART NO.	DESCRIPTION
	614 323 2506	CARTON CASE,INNER
	614 315 5928	CUSHION,LEFT
	614 315 5935	CUSHION,RIGHT
	614 323 2544	INSTRUCTION SHEET,QUICK GUIDE
	645 052 1621	POLY BAG,CABLE
	645 012 2958	POLY BAG,INST MANUAL
	645 044 8539	POLY SHEET,SET
	614 325 1859	INSTRUCTION MANUAL,INST
	645 051 6047	REMOCON,REM-SL30MT
	645 037 3893	CABLE,A/V(-3)
or	645 023 0806	CABLE,A/V(-3)
or	645 017 6012	CABLE,A/V(-3)
or	645 003 3414	CABLE,A/V(-3)

CABINET & CHASSIS

REF.NO.	PART NO.	DESCRIPTION
1	614 324 1607	ASSY,CABINET,FRONT
3	614 316 7563	DEC,DVD TRAY
4	614 316 7549	DEC,ESCUTCHEON, UNDER DVD TRAY
5	614 302 0530	DEC,WINDOW LED,STANDBY
6	614 315 5768	BUTTON,POWER
7	614 316 7556	DEC,WINDOW,IR
8	614 317 9498	BUTTON,PLAY,PLAY/STOP
9	614 317 9344	ASSY,CABINET,BENDING, AFTER BENDING
10	614 322 5997	MOUNTING,FFC,MOUNTING
11	614 323 2599	ASSY,CABINET,BOTTOM
12	614 313 6545	SPRING,PLATE,SHIELD
13	614 129 1901	FIXER,AC CORD
or	614 284 1884	FIXER,AC CORD
14	614 324 9900	PANEL,REAR

FIXING PARTS

REF.NO.	PART NO.	DESCRIPTION
Y01	411 021 6405	SCR S-TPG BIN 3X8, FRONT-BOTTOM FIX
Y02	411 165 3803	SCR S-TPG BIN 2.3X10, STANDBY PWB FIX
Y03	411 165 3803	SCR S-TPG BIN 2.3X10, FRONT PWB FIX
Y04	411 098 4205	SCR S-TPG BIN 3X8,CABINET
Y05	411 020 9803	SCR S-TPG BRZ+FLG 3X6, DVD MECHA
Y06	411 021 2704	SCR S-TPG BIN 2.6X6,MOUNTING
Y07	411 021 6405	SCR S-TPG BIN 3X8,MAIN PWB
Y08	411 021 6405	SCR S-TPG BIN 3X8,MPEG PWB
Y09	411 021 6405	SCR S-TPG BIN 3X8, BOTTOM-SPRING FIX
Y10	411 021 3503	SCR S-TPG BIN 3X10,BOTTOM-REAR
Y11	411 021 3503	SCR S-TPG BIN 3X10, REAR-ELECT PART

ELECTRICAL-PARTS

REF.NO.	PART NO.	DESCRIPTION
51	Δ 423 027 4606	FUSE 125V 1A
52	614 323 3206	ASSY,WIRE,DVD-DG
53	Δ 645 032 7537	CORD,POWER-1.86MK,FOR US-CA
54	645 053 8384	FLEXIBLE FLAT CABLE,PICK-FFC
55	614 323 3237	ASSY,WIRE,LOADING-DVD
56	Δ 645 051 0649	CORE,FERRITE,AC_CORD
or	Δ 645 031 7637	CORE,FERRITE,AC_CORD
57	645 053 8506	FLEXIBLE FLAT CABLE,IF-FFC

POWER SW P.W.BOARD ASSY

REF.NO.	PART NO.	DESCRIPTION
71	614 323 3695	ASSY,PWB POWER-SW(Only initial)
CN640	614 035 4935	SOCKET,DIP 4P,TO_FRONT
D6401	408 032 5404	LED SLP-9118C-51H-S-T1,STANDBY
D6402	407 012 4406	DIODE 1SS133
S6401	614 240 1002	SWITCH,TACT
or	614 220 5471	SWITCH,TACT
or	645 006 5958	SWITCH,PUSH 1P-1T
or	645 048 3820	SWITCH,PUSH

FRONT P.W.BOARD ASSY

REF.NO.	PART NO.	DESCRIPTION
72	614 323 1912	ASSY,PWB FRONT(Only initial)
BR601	614 315 5843	HOLDER,FL
CN601	614 323 3213	ASSY,WIRE,FRONT_DVD
CN604	614 035 4935	SOCKET,DIP 4P,TO_POWER_SW
D6040	407 012 4406	DIODE 1SS133
D6041	407 012 4406	DIODE 1SS133
D6042	407 012 4406	DIODE 1SS133
D6043	407 012 4406	DIODE 1SS133
D6044	407 012 4406	DIODE 1SS133
D6045	407 012 4406	DIODE 1SS133
DS601	407 217 8407	PHOTO DIODE SPS-440-1-G
FL601	645 044 8232	FLUORESCENT TUBE
IC601	409 519 6907	IC PT6315
S6040	645 048 3820	SWITCH,PUSH
or	645 006 5958	SWITCH,PUSH 1P-1T
or	614 240 1002	SWITCH,TACT
or	614 220 5471	SWITCH,TACT
S6041	645 048 3820	SWITCH,PUSH
or	645 006 5958	SWITCH,PUSH 1P-1T
or	614 240 1002	SWITCH,TACT
or	614 220 5471	SWITCH,TACT
S6042	614 220 5471	SWITCH,TACT
or	614 240 1002	SWITCH,TACT
or	645 006 5958	SWITCH,PUSH 1P-1T
or	645 048 3820	SWITCH,PUSH
S6043	645 048 3820	SWITCH,PUSH
or	645 006 5958	SWITCH,PUSH 1P-1T
or	614 240 1002	SWITCH,TACT
or	614 220 5471	SWITCH,TACT
S6044	645 048 3820	SWITCH,PUSH
or	645 006 5958	SWITCH,PUSH 1P-1T

PARTS LIST

REF.NO.	PART NO.	DESCRIPTION
or	614 240 1002	SWITCH,TACT
or	614 220 5471	SWITCH,TACT
S6045	645 048 3820	SWITCH,PUSH
or	645 006 5958	SWITCH,PUSH 1P-1T
or	614 240 1002	SWITCH,TACT
or	614 220 5471	SWITCH,TACT

POWER SUPPLY P.W.BOARD ASSY

REF.NO.	PART NO.	DESCRIPTION
73	614 323 1929	ASSY,PWB DENGEN(Only initial)
C4809	△ 403 357 8406	ELECT 1000U M 6.3V
C4811	△ 403 337 2103	ELECT 100U M 10V
or	△ 403 373 8305	ELECT 100U M 10V
C4812	△ 403 337 5500	ELECT 22U M 50V
or	△ 403 374 0704	ELECT 22U M 50V
C4814	△ 403 373 8800	ELECT 330U M 16V
C4815	△ 403 337 7207	ELECT 33U M 35V
or	△ 403 374 0001	ELECT 33U M 35V
C4902	403 082 0201	POLYPRO 470P J 100V
C4903	△ 403 332 7202	ELECT 47U M 25V
or	△ 403 373 9203	ELECT 47U M 25V
C4904	△ 403 145 9103	CERAMIC 220P K 1K
C4906	△ 404 088 7409	MT-POLYEST 0.1U K 250V
or	△ 404 080 8206	MT-POLYEST 0.1U K 250V
or	△ 403 376 2409	MT-POLYEST 0.1U M 250V
C4907	△ 404 088 7409	MT-POLYEST 0.1U K 250V
or	△ 404 080 8206	MT-POLYEST 0.1U K 250V
or	△ 403 376 2409	MT-POLYEST 0.1U M 250V
C4908	△ 404 080 8107	CERAMIC 2200P M 400V
CN481	614 310 2557	PLUG,14P
or	645 006 0892	PLUG,14P
D4802	△ 408 043 6704	DIODE RGP10GL-22C-012
D4803	△ 408 044 7304	DIODE SB160L-19C2-004
D4805	△ 408 043 6704	DIODE RGP10GL-22C-012
D4806	△ 408 043 6704	DIODE RGP10GL-22C-012
D4807	407 099 4603	ZENER DIODE MTZJ3.9B
D4809	△ 408 044 6307	DIODE SB140L 19C2-004
D4820	407 099 6607	ZENER DIODE MTZJ12B
D4902	407 012 4406	DIODE 1SS133
D4904	△ 407 004 9808	DIODE DSK10E
or	△ 407 012 0408	DIODE 1N4004
or	△ 407 004 9808	DIODE DSK10E
D4905	△ 407 004 9808	DIODE DSK10E
or	△ 407 012 0408	DIODE 1N4004
or	△ 407 004 9808	DIODE DSK10E
D4906	△ 407 004 9808	DIODE DSK10E
or	△ 407 012 0408	DIODE 1N4004
or	△ 407 004 9808	DIODE DSK10E
D4907	△ 407 004 9808	DIODE DSK10E
or	△ 407 012 0408	DIODE 1N4004
or	△ 407 004 9808	DIODE DSK10E
D4910	407 012 4406	DIODE 1SS133
FPC01	645 006 4760	HOLDER,FUSE
or	645 031 7903	HOLDER,FUSE
FPC02	645 006 4760	HOLDER,FUSE
or	645 031 7903	HOLDER,FUSE
IC483	△ 409 517 5704	IC KA431AZTF
or	△ 409 508 2804	IC KIA431A
or	△ 409 508 2705	IC KIA431
or	△ 409 067 7203	IC L5431
IC490	△ 410 431 1208	IC STR-G6351 LF1129
L4801	645 048 4469	INDUCTOR,22U
or	645 045 8613	INDUCTOR,10U
L4900	△ 645 045 8941	LINE FILTER
or	△ 645 038 2024	LINE FILTER
PC490	△ 408 047 0005	PHOTO COUPLE H11A817B300
or	△ 407 220 4601	PHOTO COUPLE PC123Y22
or	△ 407 104 2204	PHOTO COUPLE PC817B
or	△ 407 203 8602	PC PS2561-1-V
PR481	△ 645 042 2553	PROTECTOR,0.63A 125V

REF.NO.	PART NO.	DESCRIPTION
PR482	△ 645 042 2560	PROTECTOR,0.75A 125V
PR484	△ 645 042 2553	PROTECTOR,0.63A 125V
PT490	△ 645 045 6473	TRANS,POWER,PULSE
Q4820	405 141 3109	TR KTC3203-Y
or	405 024 9907	TR 2SD734-F
or	405 025 0200	TR 2SD734-G
WR490	614 017 6964	TERMINAL BOARD
WR491	614 017 6964	TERMINAL BOARD

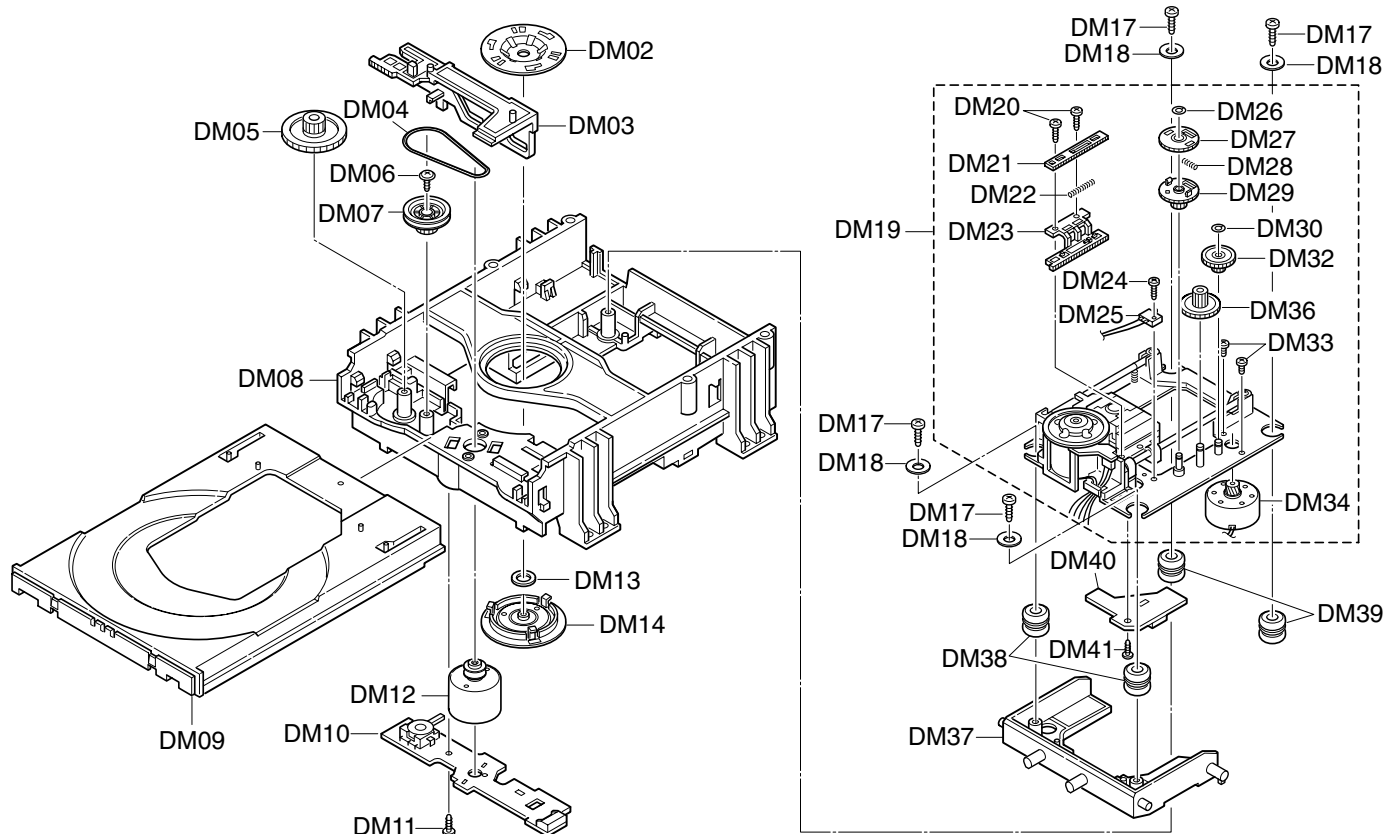
DVD,MPEG P.W.BOARD ASSY

REF.NO.	PART NO.	DESCRIPTION
74	614 324 6510	ASSY,PWB DVD(Only initial)
C1900	△ 403 373 7902	ELECT 150U M 6.3V
C1911	△ 403 373 7902	ELECT 150U M 6.3V
C8520	△ 403 373 8404	ELECT 220U M 10V
C8535	△ 403 373 7902	ELECT 150U M 6.3V
CN100	645 037 6207	SOCKET,FFC 24P
CN160	614 310 2465	PLUG,5P
or	645 005 9292	PLUG,5P
CN162	645 043 8882	SOCKET,FPC 8P
CN811	614 310 2557	PLUG,14P
or	645 006 0892	PLUG,14P
CN814	614 310 2557	PLUG,14P
or	645 006 0892	PLUG,14P
CN870	645 041 1298	JACK,RCA-6
CN871	407 223 4004	PHOTO COUPLE GP1FA551TZ
or	407 221 6406	PHOTO COUPLE TOTX179
CN872	645 044 9086	SOCKET,DIN 4P
D1000	407 221 1906	DIODE KDS121E
or	407 162 8507	DIODE DAN222
D1001	407 221 1807	DIODE KDS120E
or	407 179 1805	DIODE DAP222
D1700	407 149 0807	DIODE 1SS355
D8531	407 206 5608	ZENER DIODE UDZS10B
D8801	407 221 6505	ZENER DIODE KDZ5.6V
or	407 208 9703	ZENER DIODE UDZS5.6B
or	407 179 4608	ZENER DIODE UDZ5.6B
D8880	407 149 0807	DIODE 1SS355
D8881	407 224 8605	DIODE KDS226
IC100	409 518 1507	IC LA9703WL-MPB
IC130	409 514 5004	IC LC78663NW
IC131	410 433 0308	IC M11L416256SA-35T
or	410 431 3509	IC IS41LV16256-35T
IC160	409 532 0005	IC LA6560-A
IC161	409 168 9106	IC BA10358F
or	409 528 3805	IC NJM12904M
IC800	409 534 5701	IC ZR36742PQC
IC801	410 448 8405	IC S524A40X21-SCT0
or	410 448 8504	IC S524A40X21-SCB0
or	410 429 7908	IC AT24C02N-10SI-2.7
IC802	409 505 0803	IC PST3627U
IC806	410 430 9403	IC 74VHCT08AMTCX
IC818	410 453 9701	IC ASSY(IC LE28DW8163T-70T-MPB)
IC821	410 453 9602	IC LC3816161ET-70-MPB
or	409 482 0209	IC K4S161622D-TC80
IC822	410 453 9602	IC LC3816161ET-70-MPB
or	409 482 0209	IC K4S161622D-TC80
IC850	△ 409 534 5800	IC PQ2L2182MS
IC851	△ 409 509 9208	IC PQ070XZ01Z
IC852	△ 409 509 9208	IC PQ070XZ01Z
IC859	409 489 9700	IC NC7SZ157P6
IC871	410 454 2602	IC LC708728V-UST-TE-L,DAC_2CH
IC872	409 426 1903	IC KIA4558F
or	409 039 7804	IC NJM4558M
L1000	645 034 7887	INDUCTOR,1000 OHM
or	645 020 1813	INDUCTOR,1000 OHM
L1002	645 034 7887	INDUCTOR,1000 OHM
or	645 020 1813	INDUCTOR,1000 OHM
L1302	645 034 7887	INDUCTOR,1000 OHM
or	645 020 1813	INDUCTOR,1000 OHM

PARTS LIST

REF.NO.	PART NO.	DESCRIPTION
L8201	645 034 7887	INDUCTOR,1000 OHM
or	645 020 1813	INDUCTOR,1000 OHM
L8202	645 034 7887	INDUCTOR,1000 OHM
or	645 020 1813	INDUCTOR,1000 OHM
L8400	645 040 6430	INDUCTOR,2.2U M
L8410	645 040 6430	INDUCTOR,2.2U M
L8420	645 040 6430	INDUCTOR,2.2U M
L8451	645 040 6430	INDUCTOR,2.2U M
L8582	645 034 7887	INDUCTOR,1000 OHM
or	645 020 1813	INDUCTOR,1000 OHM
L8701	645 034 7887	INDUCTOR,1000 OHM
or	645 020 1813	INDUCTOR,1000 OHM
L8702	645 034 7887	INDUCTOR,1000 OHM
or	645 020 1813	INDUCTOR,1000 OHM
Q1002	405 146 2107	TR KTC3875-Y
or	405 146 2206	TR KTC3875-GR
or	405 014 4509	TR 2SC2412K-R
or	405 011 1006	TR 2SC1623-L6
Q1003	405 146 2107	TR KTC3875-Y
or	405 146 2206	TR KTC3875-GR
or	405 014 4509	TR 2SC2412K-R
or	405 011 1006	TR 2SC1623-L6
Q1004	405 146 2107	TR KTC3875-Y
or	405 146 2206	TR KTC3875-GR
or	405 014 4509	TR 2SC2412K-R
or	405 011 1006	TR 2SC1623-L6
Q1005	405 158 5905	TR KTA1505-Y
or	405 035 5509	TR 2SA1036K-R
Q1006	405 158 5905	TR KTA1505-Y
or	405 035 5509	TR 2SA1036K-R
Q1016	405 146 2107	TR KTC3875-Y
or	405 146 2206	TR KTC3875-GR
or	405 014 4509	TR 2SC2412K-R
or	405 011 1006	TR 2SC1623-L6
Q8720	405 166 7007	TR KTD1304
or	405 021 2307	TR 2SD1048-X6
or	405 021 2406	TR 2SD1048-X7
Q8820	405 166 7007	TR KTD1304
or	405 021 2307	TR 2SD1048-X6
or	405 021 2406	TR 2SD1048-X7
Q8880	405 146 1704	TR KTA1504-Y
or	405 146 9700	TR KTA1504-GR
or	405 134 5905	TR 2SA1037AK-R
or	405 002 0308	TR 2SA1037K-R
or	405 005 5508	TR 2SA812-M6
Q8881	405 146 1704	TR KTA1504-Y
or	405 146 9700	TR KTA1504-GR
or	405 134 5905	TR 2SA1037AK-R
or	405 002 0308	TR 2SA1037K-R
or	405 005 5508	TR 2SA812-M6
Q8882	405 159 0503	TR KRC107S
or	405 141 5608	TR DTC114YKA
S8400	645 040 6102	SWITCH,SLIDE 2P-2TX4
SG841	645 045 7449	SURGE-ABSORBER
SG842	645 045 7449	SURGE-ABSORBER
SG871	645 045 7449	SURGE-ABSORBER
SG872	645 045 7449	SURGE-ABSORBER
X1500	645 017 0157	OSC,CERAMIC 16.93MHZ
X8230	645 053 4270	OSC,CRYSTAL 27.000MHZ

EXPLODED VIEW(DVD MECHANISM)



PARTS LIST

DVD MECHANISM

REF.NO.	PART NO.	DESCRIPTION
	614 324 8460	ASSY,MECHA,710AVM2 Wofg, MECHANISM
DM02	614 320 2264	DISC,CHUCK DISC
DM03	614 320 2356	SLIDE,BASE UP/DOWN
DM04	614 323 3923	BELT,SQUARE,LOADING
DM05	614 320 2271	GEAR,LOADING GEAR
or	614 324 5230	GEAR,LOADING GEAR
DM06	412 061 7803	SPECIAL SCREW,PULLEY FIX
DM07	614 320 2349	PULLEY,LOADING RETARD PULLY
DM08	614 320 3865	CHASSIS,LOADING CHASSIS
DM09	614 320 2363	TRAY
DM11	411 021 2704	SCR S-TPG BIN 2.6X6, PWB MECHA SW FIX
DM12	645 032 4352	ASSY,MOTOR LOADING
DM13	645 051 4920	MAGNET(CHUCK),MAGNET CHUCK
or	645 054 0448	MAGNET(CHUCK),MAGNET CHUCK
DM14	614 320 2288	HOLDER,CHUCK HOLDER
DM17	411 021 1806	SCR S-TPG BIN 2.6X10,BASE FIX
DM18	411 092 0906	WASHER Z 2.6X10X0.5,BASE FIX
DM19	614 324 8484	ASSY,MECHA,700AVM2BA Wofg, BASE MECHA
DM20	411 184 0302	SCR S-TPG PAN PCS 1.7X4.5, RACK FIX
DM21	614 310 2083	GEAR,RACK,MOVE PICKUP(FREE)
DM22	614 310 6159	SPRING,COMP, FOR BACK RUSH(RACK)
DM23	614 310 2076	GEAR,RACK,MOVE PICKUP(FIX)
DM24	411 018 4704	SCR PAN PCS 1.7X5,LIMIT SW FIX
DM25	645 040 9899	SWITCH,MICRO 1P-2T,LIMIT SW
DM26	412 057 8304	SPECIAL WASHER,FOR GEAR 4 FIX
DM27	614 310 2069	GEAR,GEAR-5

REF.NO.

PART NO.

DESCRIPTION

DM28	614 310 6142	SPRING,COMP,FOR BACK RUSH
DM29	614 310 2052	GEAR.,GEAR-4
DM30	412 057 8304	SPECIAL WASHER,FOR GEAR 2 FIX
DM32	614 310 2038	GEAR.,GEAR-2
DM33	411 106 7709	SCR PAN PCS 1.7X2.5, SLED MOTOR FIX
DM34	645 051 5194	ASSY,MOTOR,SLED MOTOR
DM36	614 310 2045	GEAR.,GEAR-3
DM37	614 320 2301	MOUNTING,BASE MECHA MOUNTING
DM38	614 310 6128	SPACER,MECHA, BASE MECHA FLOATING
DM39	614 322 9070	SPACER,MECHA, BASE MECHA FLOATING
DM41	411 022 7807	SCR S-TPG PAN 2X6, PWB MECHA IF FIX

MECHA SW P.W.BOARD ASSY

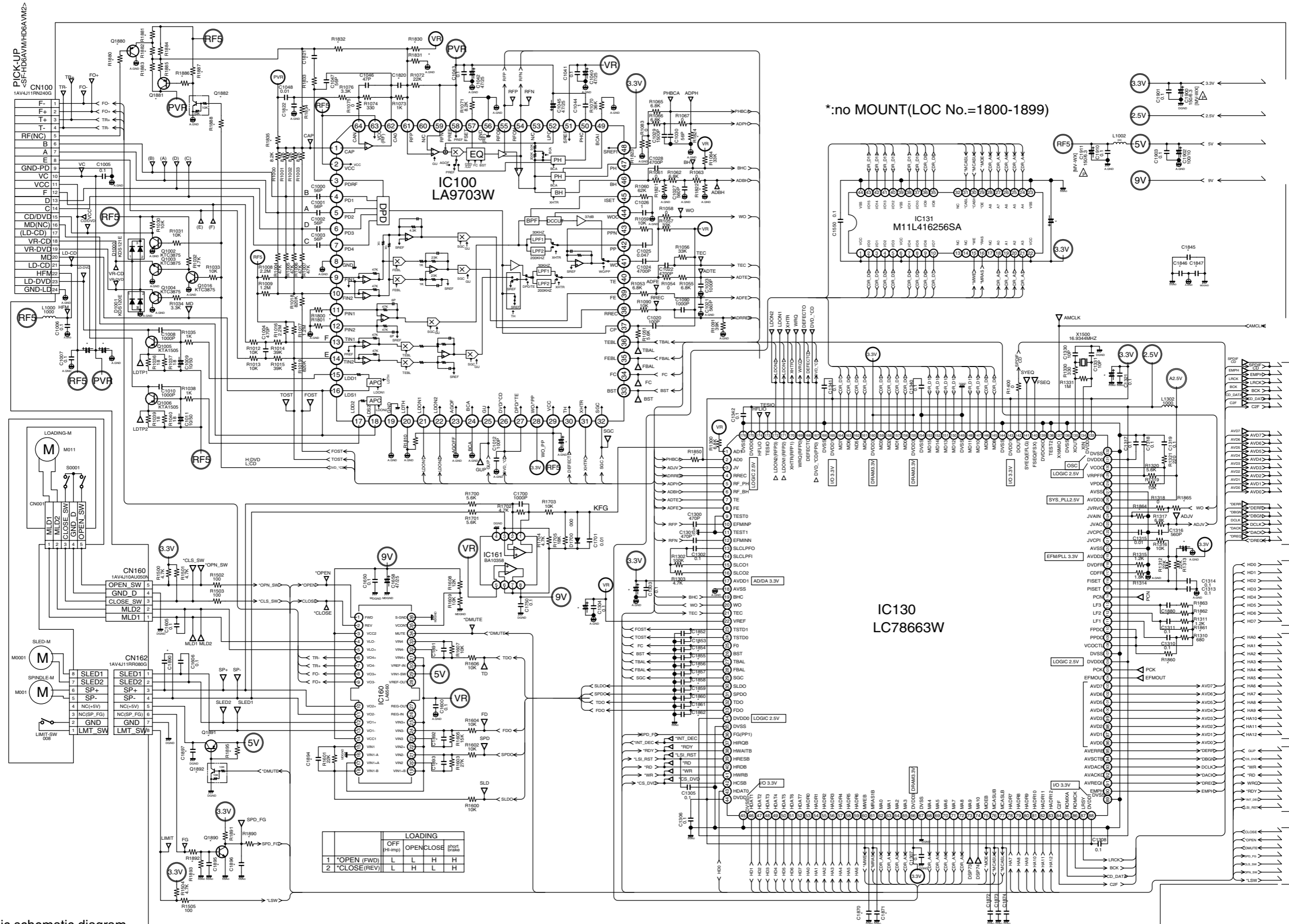
REF.NO.	PART NO.	DESCRIPTION
DM10	614 320 2219	ASSY,PWB MECHA SW(Only initial)
CN001	614 310 2618	PLUG,5P,MOTOR & SW PWB CONNE
or	645 006 0922	PLUG,5P,MOTOR & SW PWB CONNE
S0001	645 051 5378	SWITCH,LEVER,MECHA SW

MECHA IF P.W.BOARD ASSY

REF.NO.	PART NO.	DESCRIPTION
DM40	614 320 5838	ASSY,PWB MECHA IF(Only initial)
CN002	645 023 3760	SOCKET,FPC 8P, MECHA IF FFC SOCKET

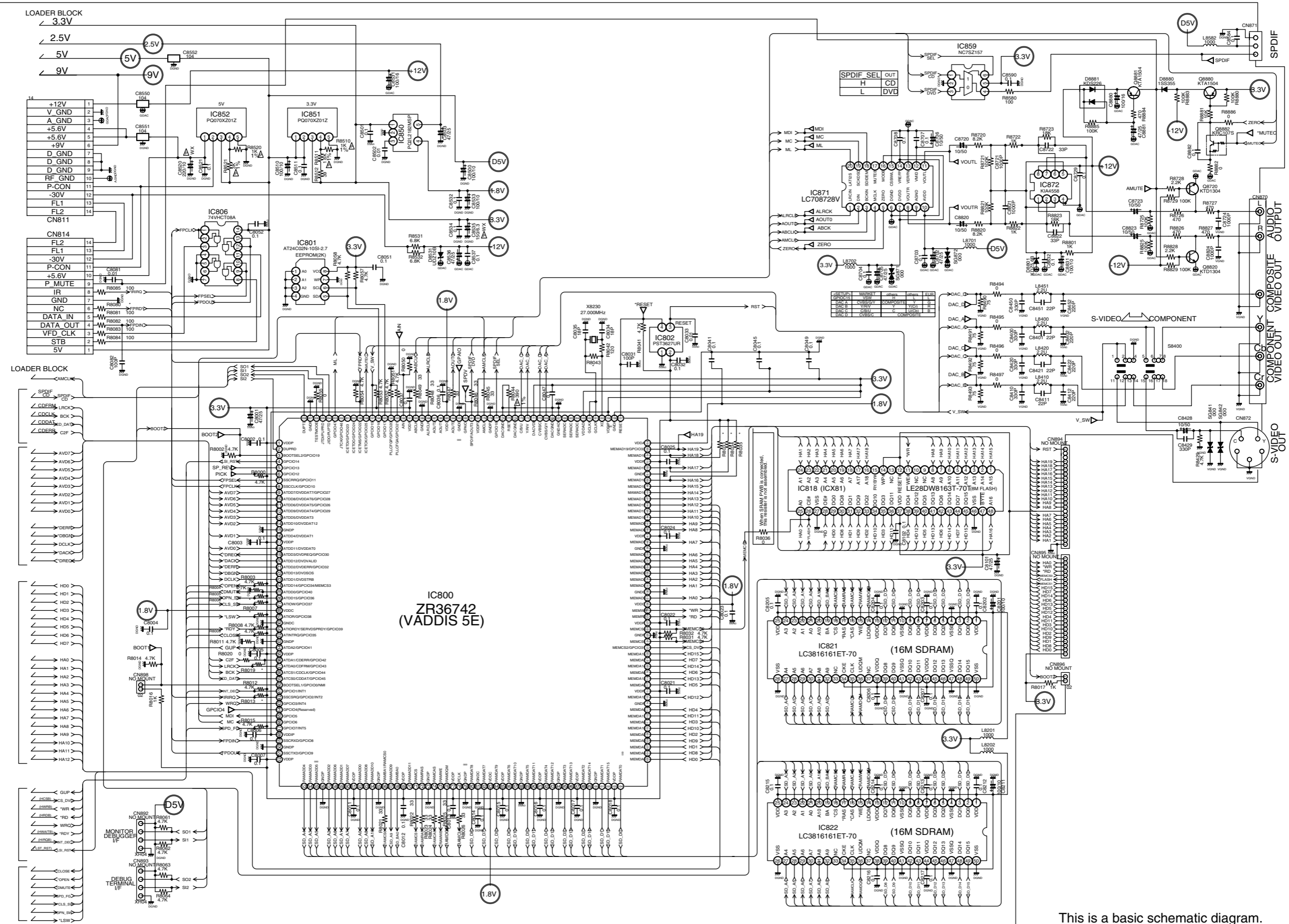
NOTE

SCHEMATIC DIAGRAM (DVD)



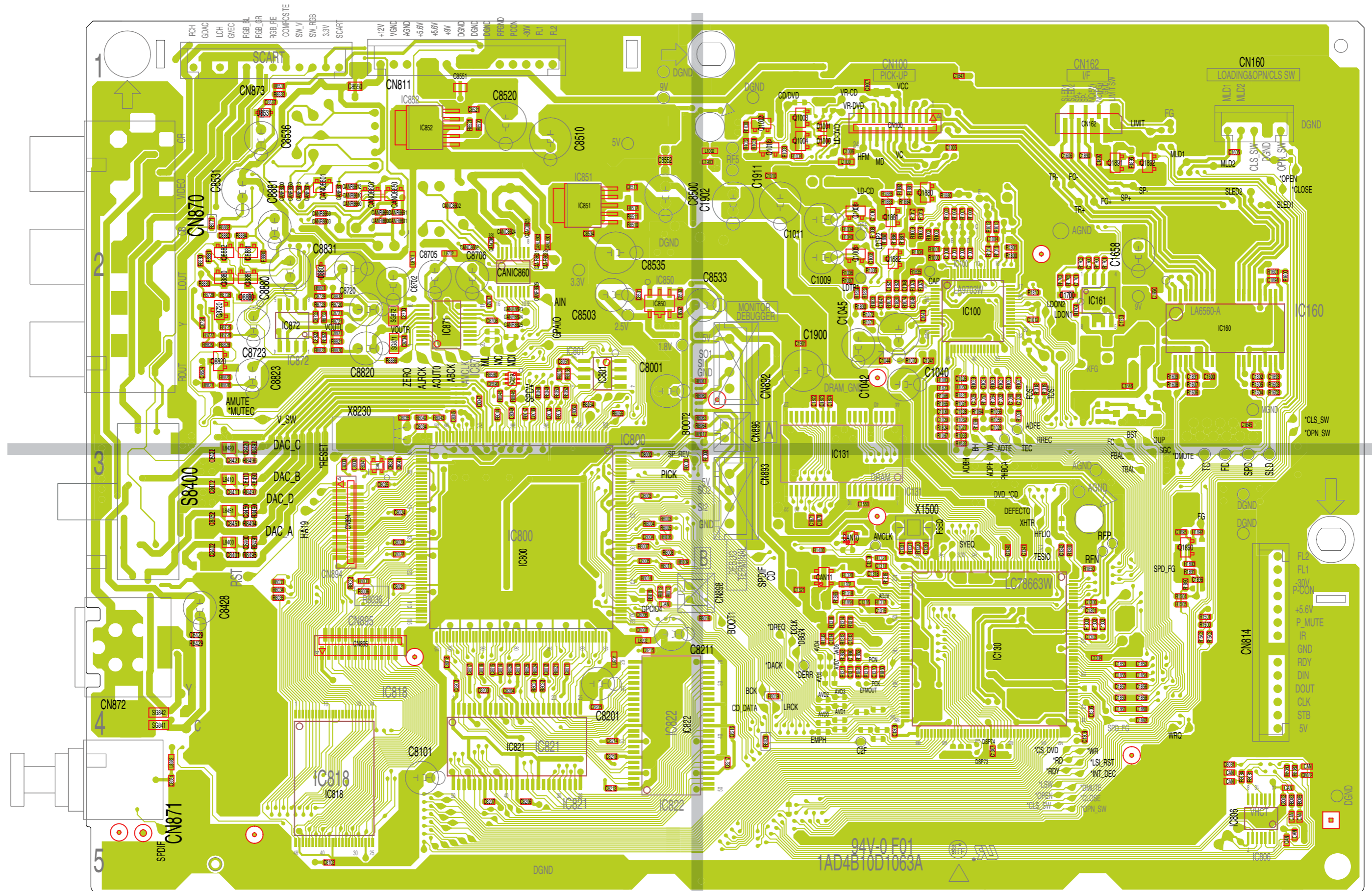
This is a basic schematic diagram.

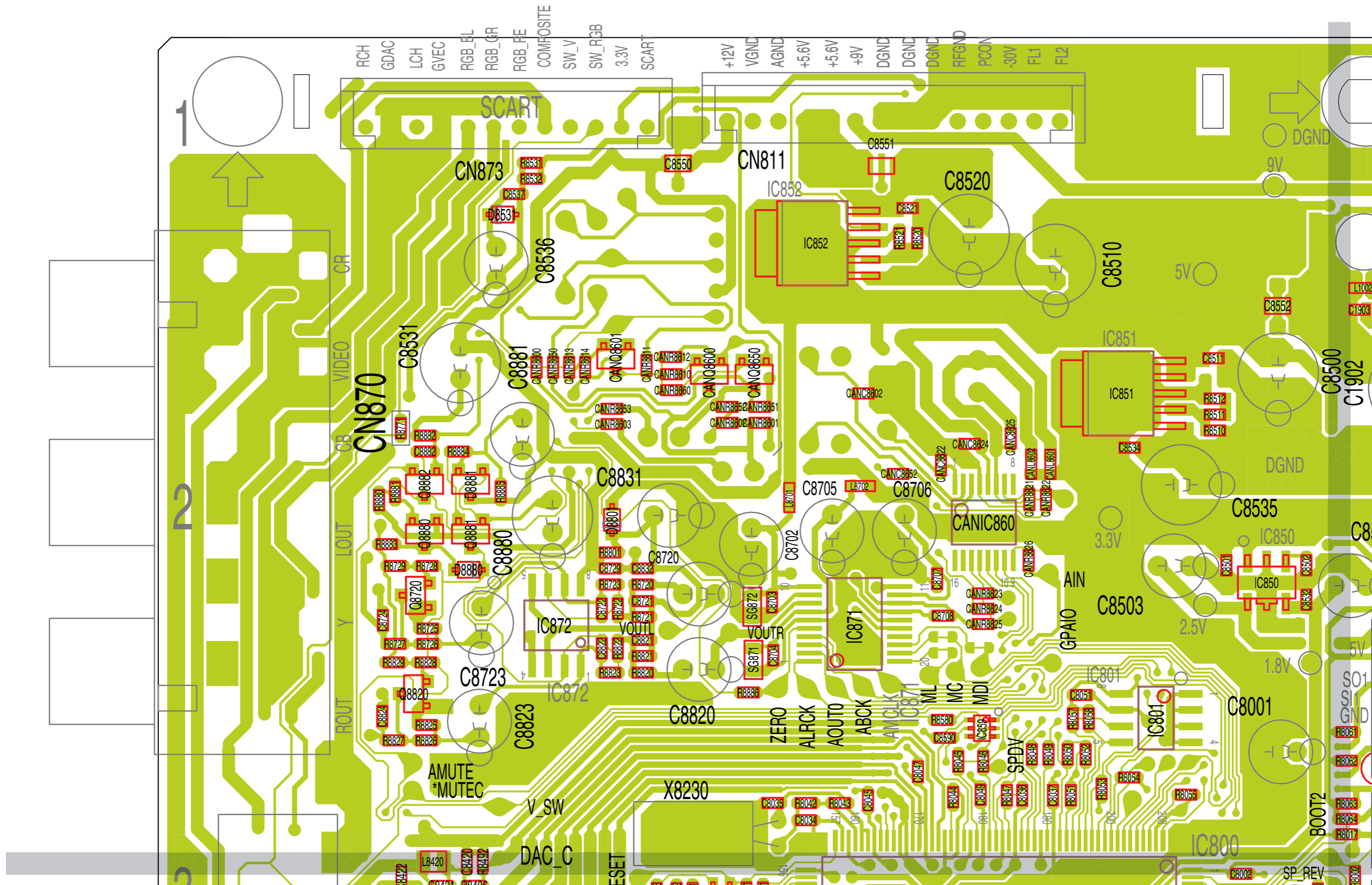
SCHEMATIC DIAGRAM (MPEG)



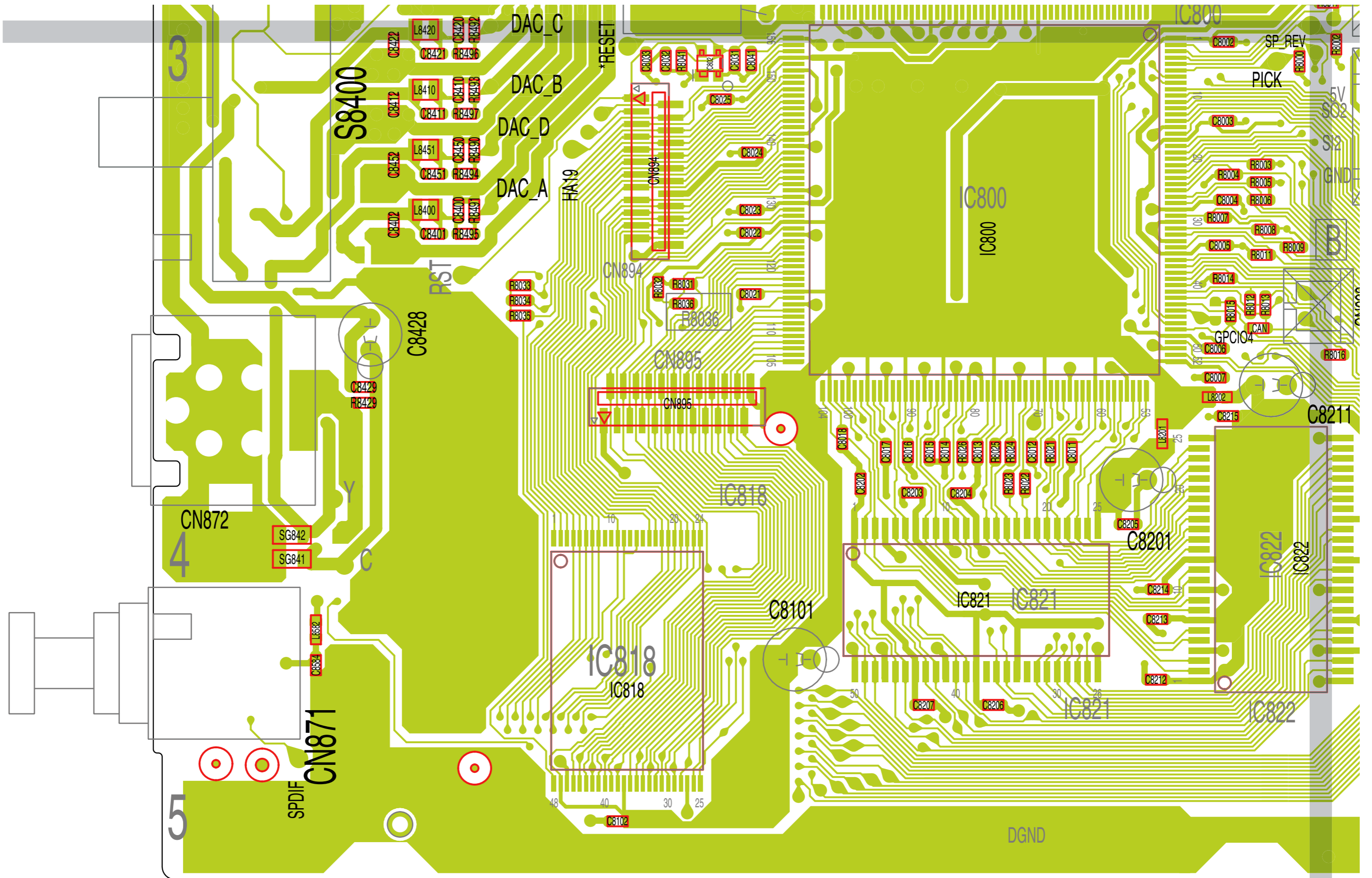
This is a basic schematic diagram.

WIRING DIAGRAM (DVD and MPEG A Side)

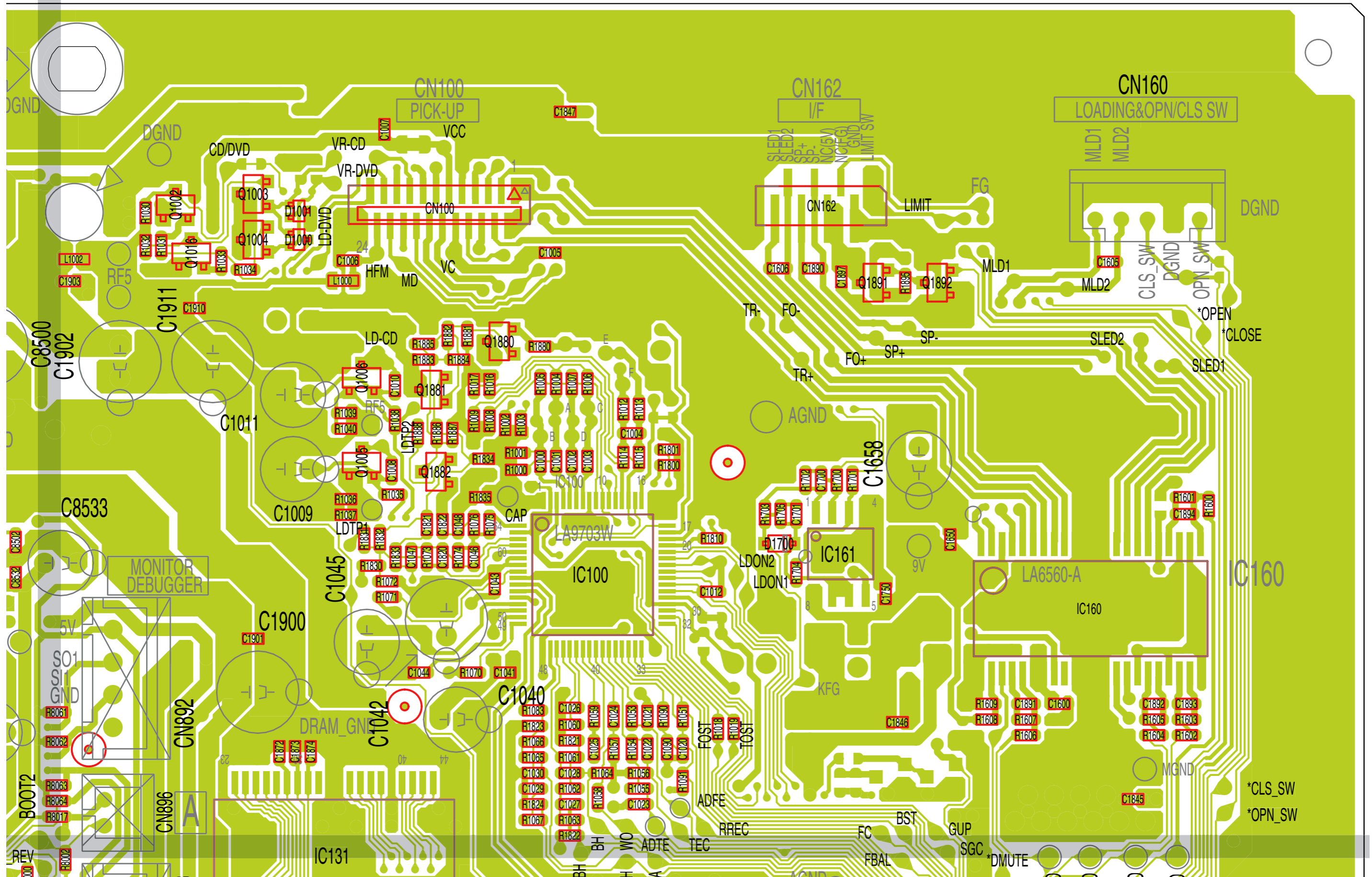




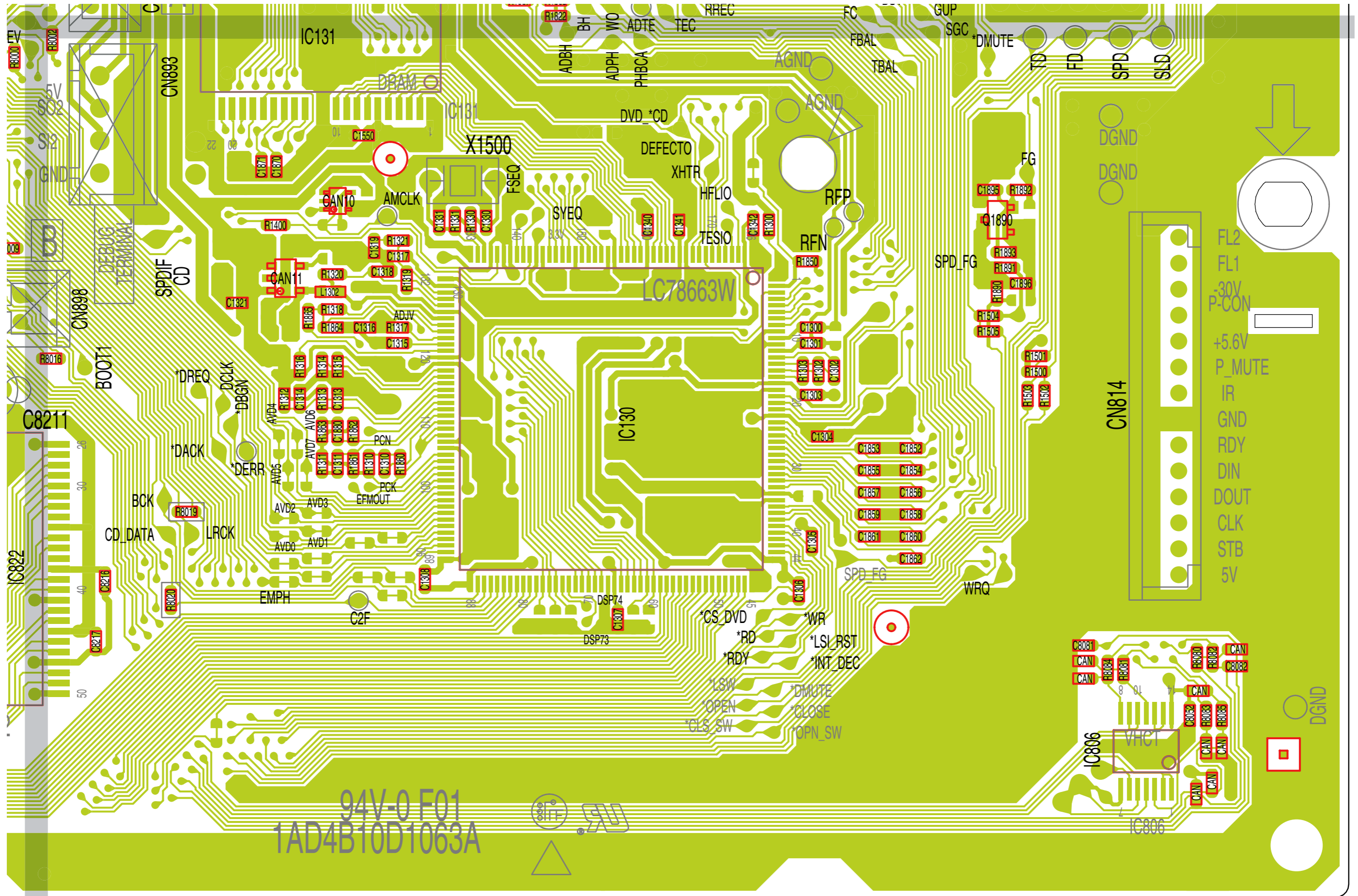
WIRING DIAGRAM (DVD and MPEG A Side Bottom Left)



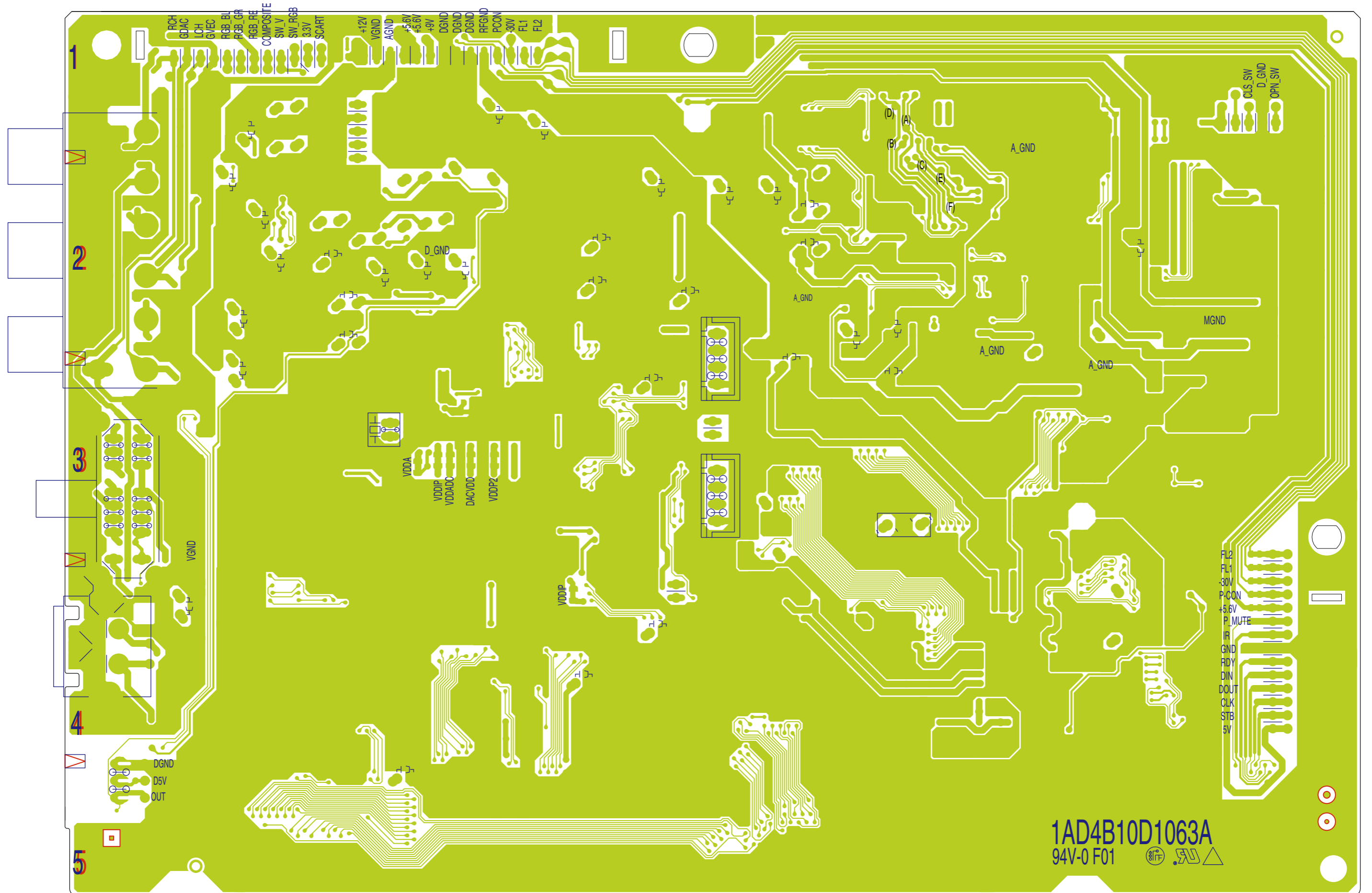
WIRING DIAGRAM (DVD and MPEG A Side Top Right)



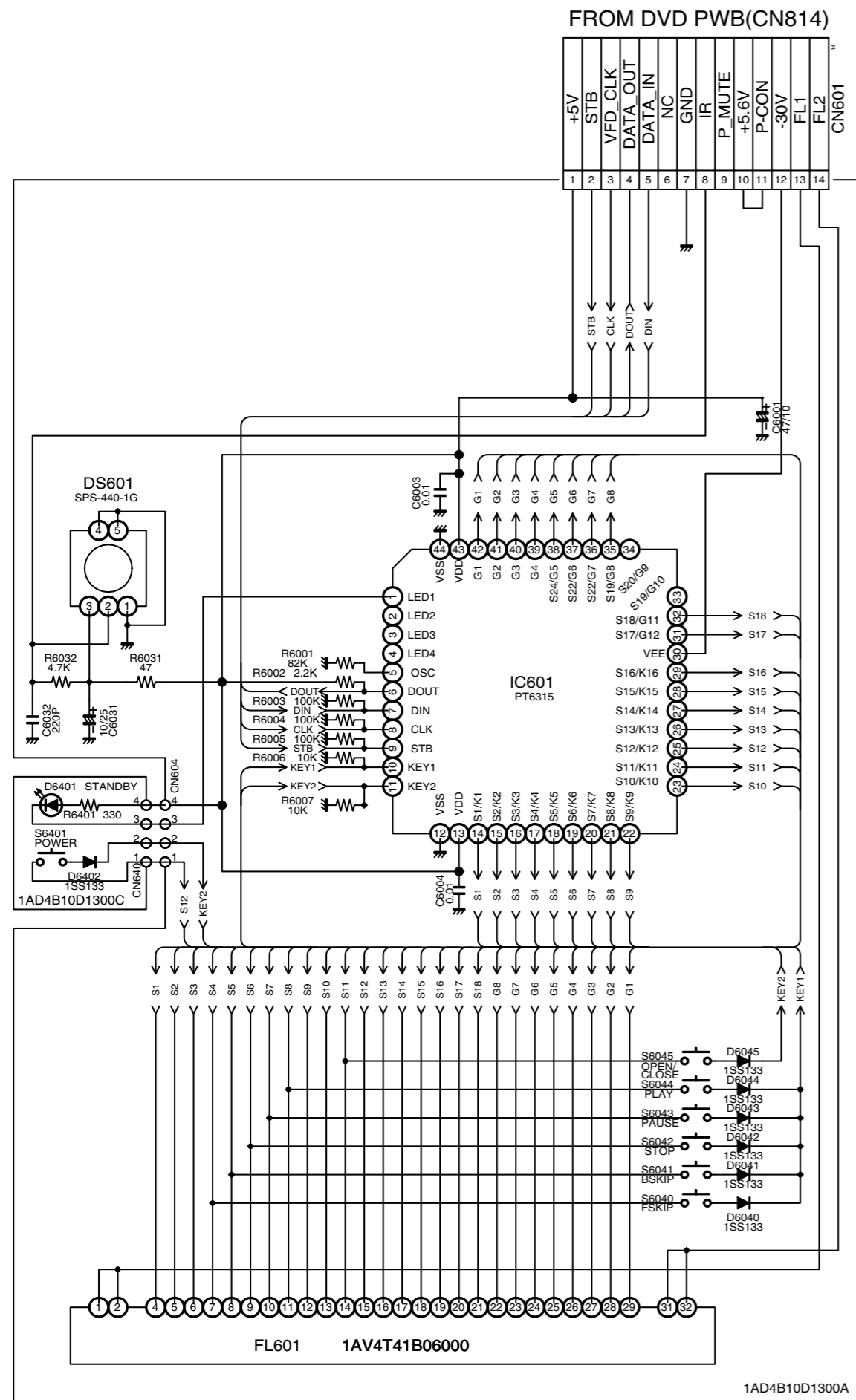
WIRING DIAGRAM (DVD and MPEG A Side Bottom Right)



WIRING DIAGRAM (DVD and MPEG B Side)



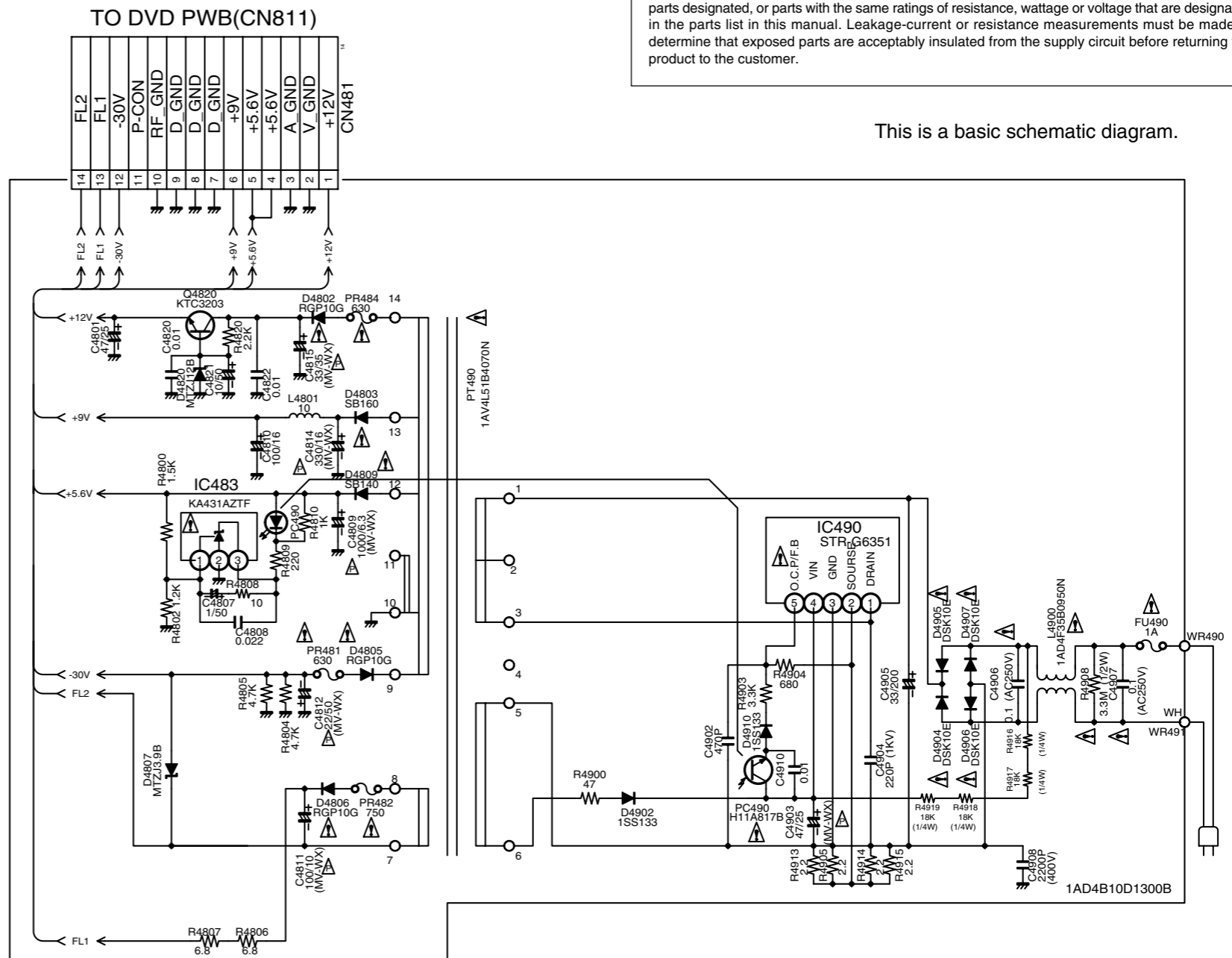
SCHEMATIC DIAGRAM (FRONT , POWER SUPPLY and POWER SW)



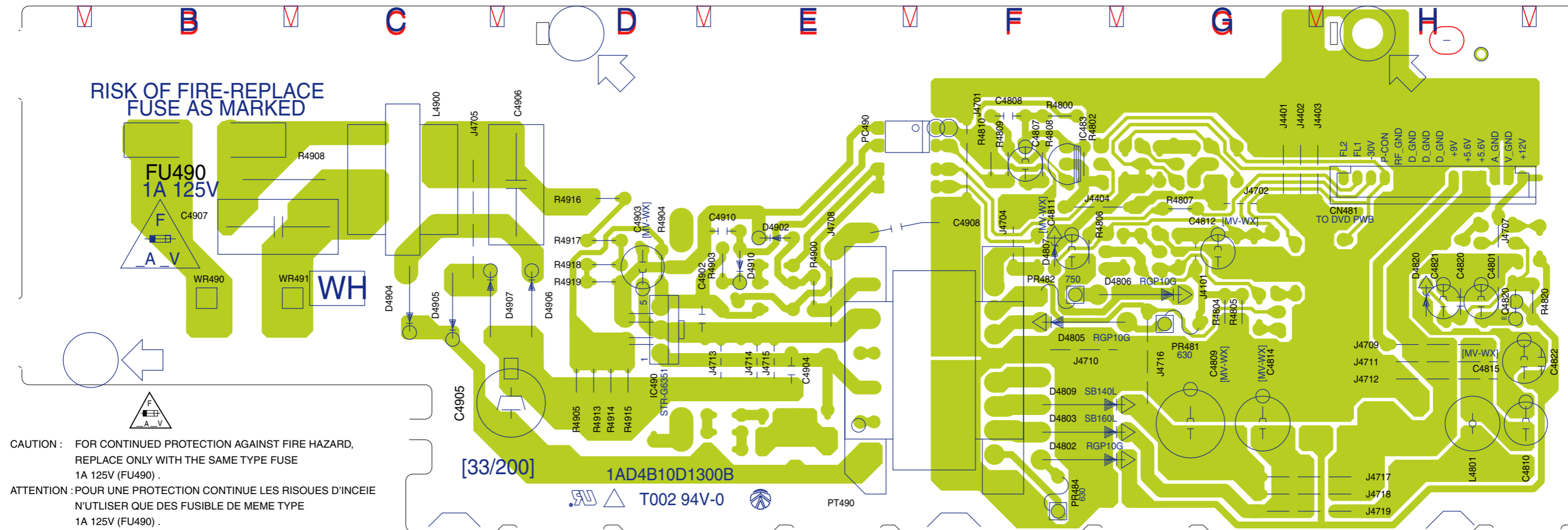
PRODUCT SAFETY NOTICE

Each precaution in this manual should be followed during servicing. Components identified with the IEC symbol Δ in the parts list and the schematic diagram designated components in which safety can be of special significance. When replacing a component identified by Δ , use only the replacement parts designated, or parts with the same ratings of resistance, wattage or voltage that are designated in the parts list in this manual. Leakage-current or resistance measurements must be made to determine that exposed parts are acceptably insulated from the supply circuit before returning the product to the customer.

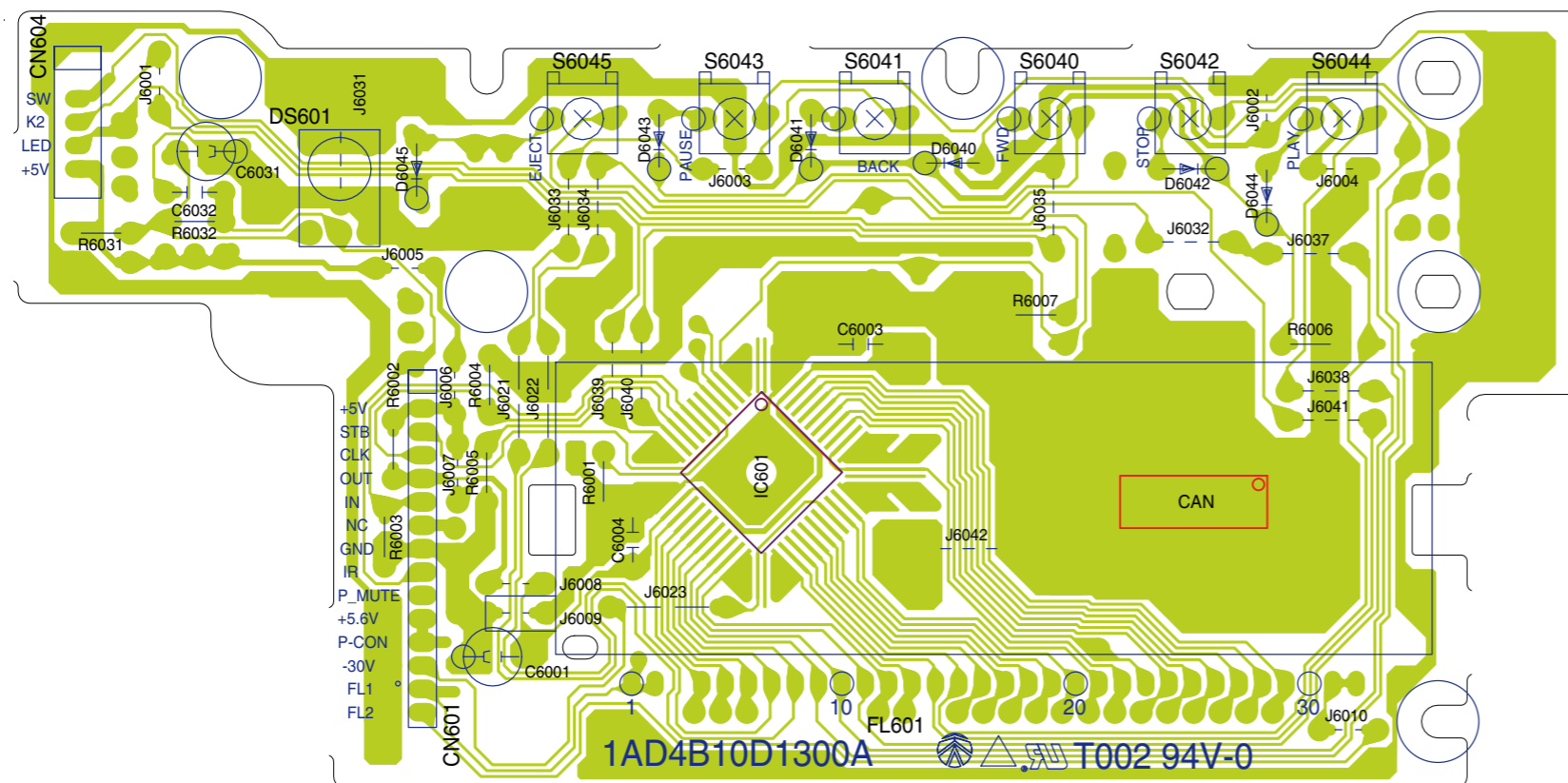
This is a basic schematic diagram.



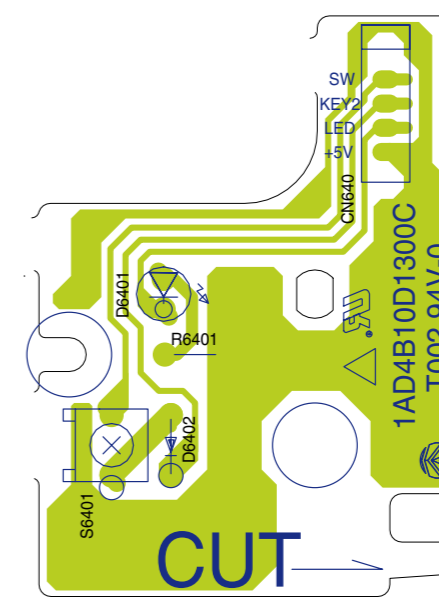
WIRING DIAGRAM (FRONT , POWER SUPPLY and POWER SW)



POWER SUPPLY



FRONT



POWER SW